

VALRIYA

SPEC GRADE COMMERCIAL LED LIGHTING

SLC SERIES ADJUSTABLE STRIP LIGHT

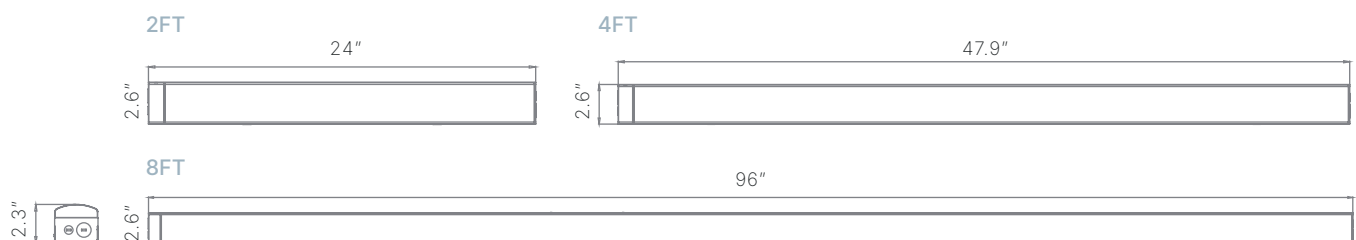
The SLC Series is a contractor friendly strip light that features an adjustable color temperature and wattage output, with multiple installation options. Ideal for stairwells, corridors, indoor parking, and storage applications.

- Adjustable color temperature and power output
- Available in 3 different lengths: 2ft, 4ft, and 8ft
- Sensor ready out of the box, optional EM integration
- Foldable 8ft for cost effective shipping

TECHNICAL DETAILS

POWER 2FT	10W / 16W / 20W / 24W
POWER 4FT	22W / 28W / 34W / 40W
POWER 8FT	46W / 54W / 62W / 70W
COLOR TEMPERATURE	3500K / 4000K / 5000K
CRI	80+ CRI
VOLTAGE	120-277VAC
EFFICIENCY	Up to 160lm/w
DIMMING	0-10V
LUMENS	Up to 10,000lm
HOUSING	Steel
MOUNTING	Suspension, Surface
OPERATING TEMPERATURE	-4°F to 104°F
WARRANTY	5 Years
FINISH	White
LOCATION	Damp
CERTIFICATIONS	UL

DIMENSIONS



CLIENT
PROJECT
NOTES



LUMENS 4000K

2FT	10W	16W	20W	24W
	1,600lm	2,500lm	3,000lm	3,500lm
4FT	22W	28W	34W	40W
	3,400lm	4,200lm	5,000lm	5,700lm
8FT	46W	54W	62W	70W
	7,100lm	8,100lm	9,100lm	10,000lm

L70: 50,000+ HOURS

SLC SERIES

ADJUSTABLE STRIP LIGHT

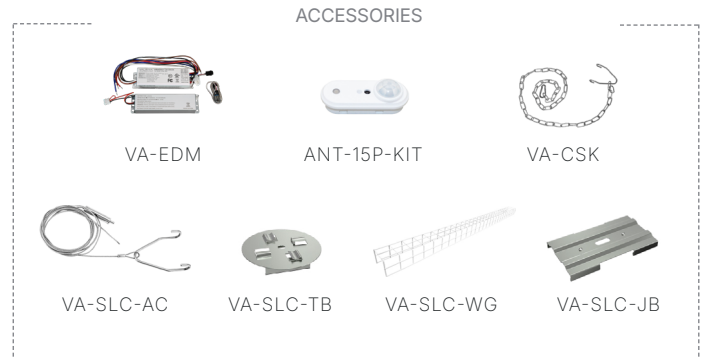
ORDERING GUIDE

Example: VA-SLC-4-ADJ-ER

VA-SLC	<input type="text"/>	ADJ	<input type="text"/>	R
	SIZE / POWER	CCT	OPTIONS	SENSOR
	[2] 2ft - 10W / 16W / 20W / 24W [4] 4ft - 22W / 28W / 34W / 40W [8L] 8ft - 46W / 54W / 62W / 70W	[ADJ] Adjustable CCT 3500K / 4000K / 5000K	[E] 8W EM Driver, CEC Listed	[R] Sensor Receptacle
¹ Consult factory for other EM options				

ACCESSORIES*

SKU	DESCRIPTION
VA-EDM-LP08-058	8W EM Driver, CEC Listed
ANT-15P-KIT	PIR Sensor
VA-CSK	Chain Suspension Kit
VA-SLC-AC	Aircraft Cable Suspension Kit
VA-SLC-TB	T-Grid Bracket
VA-SLC-WG	Wire Guard
VA-SLC-JB	Joining Bracket



*Items must be ordered separately

PHOTOMETRICS 40W / 4000K

